



# Data Analytics and Reporting

## Our Services

### What?

Via an intelligent and automated analysis of your customs-related raw data, we support you in gaining valuable insights and thus optimize your customs and export control processes.

### How?

By analyzing, verifying and modelling of data relating to customs or export controls with the help of a high-end data exploration and visualization platform.

### Why AWB Consulting?

Our team consists of dedicated professionals who carefully analyze the collected data in order to draw relevant results to potentially improve your customs processes.

#### ■ Data Analytics

- Automated analysis of your customs data to identify and correct control weaknesses, errors and inconsistencies in a timely manner
- Visualization of patterns in master data and recognition of potential savings opportunities
- Extensive evaluation options with regard to current KPIs and forecast scenarios
- Support in the implementation of the proposed optimization possibilities

#### ■ Customs Reporting

- Data modelling - collecting, defining, organizing and documenting to show database structures
  - E.g. import, export - compression/reproduction per country
- IT-based customs-related generation of data or key figures
- Roll-out questionnaires across corporate departments
- workflow management with deadline monitoring
- Validation and preparation of the corresponding reports in the preferred format

## Key Benefits

- ✓ Time and cost saving
- ✓ Improved quality of data
- ✓ Thoroughly access and view of database
- ✓ Tailor made surveys
- ✓ Continuous review of progress

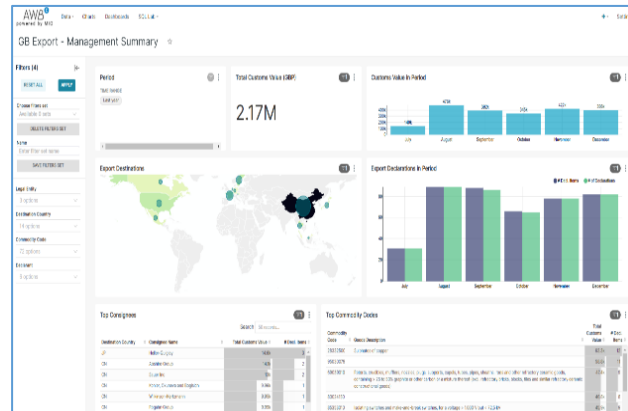


# Data Analytics and Reporting

## Sample Use Cases

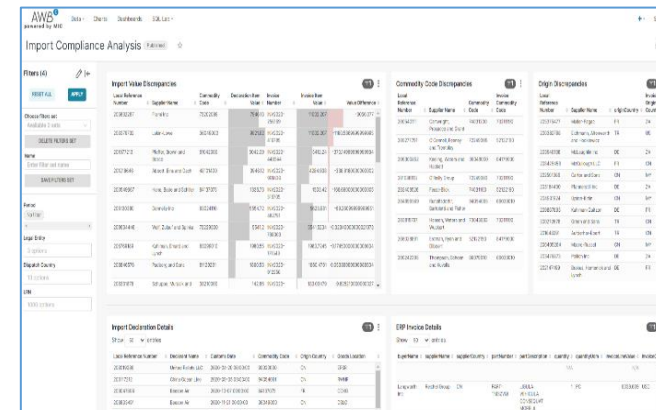
### Reporting

Systematic understanding of total delivered cost including duties and available reliefs



### Compliance

Automized analysis of customs data in order to identify weaknesses and errors



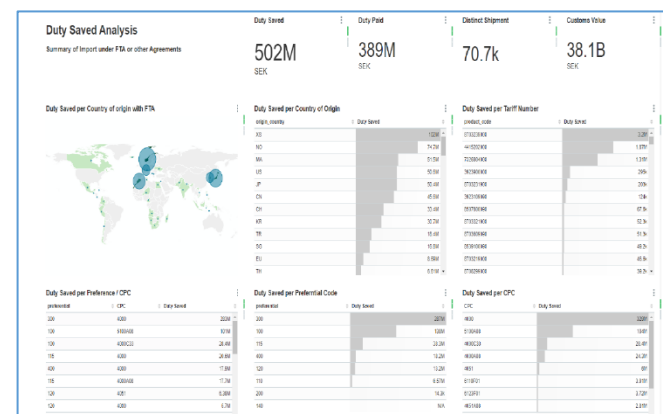
### Forecasting

Enable real-time, configurable data analysis for steering and predictive capabilities



### Savings

Identify and simulate possible saving scenarios



**Data Sources:**  
Transactional Master      External Declaration

## Technology

